

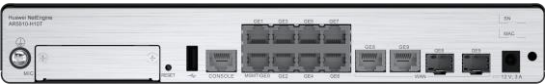
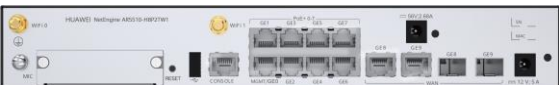

Huawei NetEngine AR5510-H Series Enterprise Routers

Huawei AR5510-H series enterprise routers are 1U fixed routers designed for use in small- and medium-sized business (SMBs) and small-sized enterprise branches. The AR5510-H integrates various service features such as SD-WAN, routing, switching, security, and WLAN, providing diversified services and high performance.

Product Overview

Huawei's next-generation NetEngine AR5510-H series enterprise routers use multi-core processors and a non-blocking switching structure, helping to deliver three times the industry average performance. The NetEngine AR5510-H also integrates functions such as SD-WAN, cloud management, routing, switching, VPN, WLAN, and security, ensuring diversified and cloud-based services are fully supported.

Huawei NetEngine AR5510-H series enterprise routers can be deployed at branches of SMBs and small-sized enterprises as required to provide enterprise network egress capabilities. NetEngine AR5510 series consists of models such as the NetEngine AR5510-H10T1, NetEngine AR5510-H8P2TW1, NetEngine AR5510-H10T2XW1. Huawei provides various models which can meet networking requirements of enterprises of different scales.

 <p>NetEngine AR5510-H10T1</p>	<ul style="list-style-type: none"> • Forwarding Performance: 1 Gbps • Fixed WAN ports: 2*GE Combo • Fixed LAN ports: 8*GE RJ45(can be configured as WAN) • Dimensions (H x W x D): 44.0 mm x 300.0 mm x 216.4 mm
 <p>NetEngine AR5510-H8P2TW1</p>	<ul style="list-style-type: none"> • Forwarding Performance: 1 Gbps • Fixed WAN ports: 2*GE Combo • Fixed LAN ports: 8*GE RJ45(can be configured as WAN) • Wi-Fi: 802.11ac/b/g/n • PoE: compliance with IEEE 802.3af and 802.3at • Dimensions (H x W x D): 44.0 mm x 300.0 mm x 216.4 mm
 <p>NetEngine AR5510-H10T2XW1</p>	<ul style="list-style-type: none"> • Fixed WAN ports*: 2*10GE SFP+, 2*GE RJ45 • Fixed LAN ports: 8*GE RJ45(can be configured as WAN) • Wi-Fi: 802.11 ax/ac/b/g/n • Dimensions (H x W x D): 44.0 mm x 300.0 mm x 216.4 mm

Features and Benefits

Features and Benefits

Service Requirement	Features and Benefits
---------------------	-----------------------

Service Requirement	Features and Benefits
High performance	<ul style="list-style-type: none"> Multi-core processors and a non-blocking switching structure Three times the industry average performance, providing the lowest latency for key services
High reliability	<ul style="list-style-type: none"> Link backup for enterprise services, improving reliability Fault detection and determination in milliseconds, minimizing service interruption time
5G Wireless access	<ul style="list-style-type: none"> AR5510-H series support RU-5G-201, provide high wireless bandwidth experience Support dual architecture, NSA/SA
Easy O&M	Multiple management modes, including SD-WAN management, SNMP-based network management, web-based network management, and cloud-based management, simplifying network deployment and reducing OPEX
Service convergence	Integration of functions such as routing, switching, VPN, security, and WLAN, meeting diversified enterprise service requirements, saving space, and reducing TCO
Security	Built-in firewall, IPS, URL filtering, and multiple VPN technologies, providing comprehensive security protection capabilities
SD-WAN Ready	<ul style="list-style-type: none"> Built-in SD-WAN solution, building cost-effective and business-friendly connections over the Internet ZTP (email-, USB-, and DHCP-based deployment), minimizing skill requirements and provisioning devices in minutes First packet identification (FPI) for SaaS applications and service awareness for complex applications, identifying over 90% of applications Traffic steering based on bandwidth and link quality, ensuring experience of key applications and improving bandwidth utilization to up to 90%

Architecture Highlights

Architecture Feature	Benefits
Multi-core processor	High-performance multi-core processors, supporting high-speed WAN connections, powerful route calculation capabilities, and enhanced L4-L7 service processing
Extensive network interfaces	Extensive flexible interface cards such as LAN, WAN, 3G/LTE, and WLAN

Product Specifications

NetEngine AR5510-H Series Technical Specifications

Item	NetEngine AR5510-H10T1	NetEngine AR5510-H8P2TW1	NetEngine AR5510-H10T2XW1
Forwarding Performance (LAN - > WAN + WAN - > LAN, NAT + ACL + QoS, IMIX, Default)	1 Gbps	1 Gbps	1 Gbps
Forwarding Performance (LAN - > WAN + WAN - > LAN, NAT + ACL + QoS, IMIX, Boost License)	2 Gbps	2 Gbps	2 Gbps
IPsec performance (IMIX)	2 Gbps	2 Gbps	2 Gbps
IPsec performance (1400 bytes)	3.7 Gbps	3.7 Gbps	3.7 Gbps

Item	NetEngine AR5510-H10T1	NetEngine AR5510-H8P2TW1	NetEngine AR5510-H10T2XW1
Fixed WAN ports	2 x GE combo	2 x GE combo	2 x 10GE SFP+, 2 x GE RJ45
Fixed LAN ports	8 x GE RJ45(can be configured as WAN)		
Service extension slot	1 x MIC	1 x MIC	1 x MIC
Wi-Fi	-	Dual-band (2.4 GHz and 5 GHz), 802.11b/g/n/ac	Dual-band (2.4 GHz and 5 GHz), 802.11b/g/n/ac/ax
PoE	-	support PoE	-
PoE capability	-	GE0 to GE7 support PoE+ out, Maximum output power of 100 W	-
USB port	1 x USB	1 x USB	1 x USB
Auxiliary or console port	1 x RJ45 console port		
Memory	2 GB	2 GB	2 GB
Flash memory	1 GB	1 GB	1 GB
Router dimensions, With no mounting bracket installed (H x W x D)	44.0 mm x 300.0 mm x 216.4 mm	44.0 mm x 300.0 mm x 216.4 mm	44.0 mm x 300.0 mm x 216.4 mm
Packaging dimensions (H x W x D)	155 mm x 455 mm x 280 mm	155 mm x 455 mm x 280 mm	155 mm x 455 mm x 280 mm
Weight	1.9 kg	1.9 kg	1.9 kg
Rack	IEC	IEC	IEC
Occupied rack space	1U	1U	1U
Rated input voltage range (AC)	100 V to 240 V	100 V to 240 V	100 V to 240 V
Rated input frequency (AC)	50 Hz/60 Hz	50 Hz/60 Hz	50 Hz/60 Hz
Maximum input voltage range (AC)	90 V to 264 V	90 V to 264 V	90 V to 264 V
Maximum input current (AC)	3 A	5 A	1.5 A
Maximum output power (AC)	36 W	60 W	60 W
Typical power consumption	24 W	38 W	-
Maximum power consumption	28 W	43 W	45 W
Airflow	Left to right	Left to right	Left to right
Noise level	47.4dB	47.4dB	34dB
Operating temperature	0 °C to 45 °C		
Operating humidity	5% to 95% (non-condensing)		
Operating altitude	< 5000 m (16404.2 ft.)		

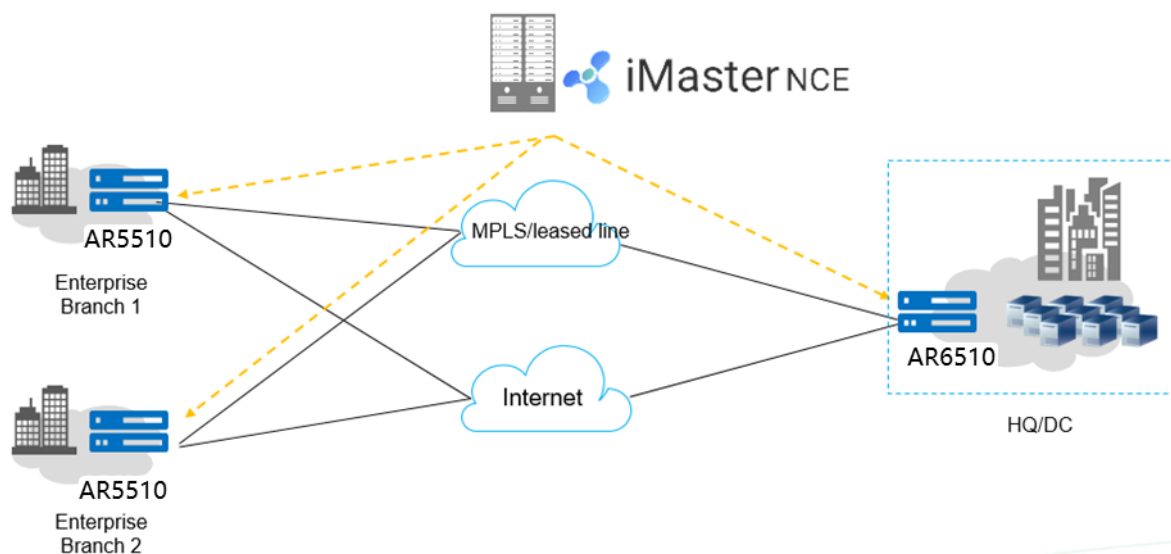
Item	NetEngine AR5510-H10T1	NetEngine AR5510-H8P2TW1	NetEngine AR5510-H10T2XW1
Storage temperature	-40 ° C to +70 ° C		
Storage altitude	< 5000 m (16404.2 ft.)		
Features and Protocols			
Basic function	DHCP server/client/relay, PPPoE server/client, PPPoA server/client, PPPoEoA server/client, NAT, and sub-interface management		
LAN	IEEE 802.1P, IEEE 802.1Q, IEEE 802.3, VLAN management, VLAN aggregation, MAC management, STP/RSTP		
3G/LTE	By using LTE card,FDD LTE, TDD LTE, DC-HSPA+, HSPA+, HSPA, and WCDMA		
WLAN (AP)		WLAN QoS (WMM), WLAN security (WEP/WPA/WPA2/key management), WLAN radio management (802.11b/g/n/ac), and WLAN user management	AP management, WLAN QoS (WMM), WLAN security (WEP/WPA/WPA2/key management), WLAN radio management (802.11b/g/n/ac/ax), and WLAN user management
IPv4 unicast routing	Routing policies, static routes, RIP, OSPF, IS-IS, BGP		
IPv6 unicast routing	Static routes, routing policies, RIPng, OSPFv3, IS-ISv6, BGP4+		
Basic IPv6 function	IPv6 ND, IPv6 PMTU, IPv6 FIB, IPv6 ACL, ICMPv6, DNSv6, DHCPv6		
IPv6 tunneling	Manual tunnel, automatic tunnel, GRE tunnel, IPv6 over IPv4 tunnel, 6 to 4 tunnel, ISATAP		
Multicast	IGMP v1/v2/v3, PIM-SM, PIM-DM, MSDP, MBGP, IPv6 PIM, MLD		
MPLS	LDP, MPLS L3 VPN, static LSP, dynamic LSP, MPLS TE, IP FRR, LDP FRR, TE FRR		
VPN	IPsec VPN, GRE VPN, DSVPN, A2A VPN, L2TP VPN, L2TPv3 VPN, VxLAN		
QoS	DiffServ mode, priority mapping, traffic policing (CAR), traffic shaping, congestion avoidance, congestion management, MQC (traffic classifier, traffic behavior, and traffic policy), hierarchical QoS, WLAN QoS, FR QoS, Smart Application Control (SAC)		
WAN Optimization	Multi-fed and Selective receiving, per-packet load balancing		
Security	ACL (v4/v6), domain-based stateful firewall, 802.1X authentication, MAC address authentication, portal authentication, AAA authentication, RADIUS authentication, HWTACACS authentication, PKI, broadcast storm suppression, ARP security, ICMP attack defense, URPF, CPCAR, blacklist, attack source tracing, online behavior management, IPS, URL filtering		
Management and maintenance	Upgrade management, device management, web-based network management, GTL, SNMP (v1/v2c/v3), RMON, NTP, CWMP, Auto-Config, URL-based/USB-based/DHCP deployment, NETCONF/YANG, CLI, Netstream, IP FPM, TCP FPM, TWAMP Light, IP accounting, NQA		

Networking and Application

- SD-WAN Using Hybrid Links

In the SD-WAN Solution, the NetEngine AR5510-H functions as the gateway of SMBs and small-sized enterprise branches and supports hybrid access using multiple physical links, such as Internet links, and LTE links. The solution also leverages Huawei's next-generation controller, the Agile Controller, which implements centralized and visualized management. The NetEngine AR5510-H provides extensive SD-WAN features and delivers optimal service experience for enterprises through intelligent application identification, intelligent traffic steering, and intelligent acceleration.

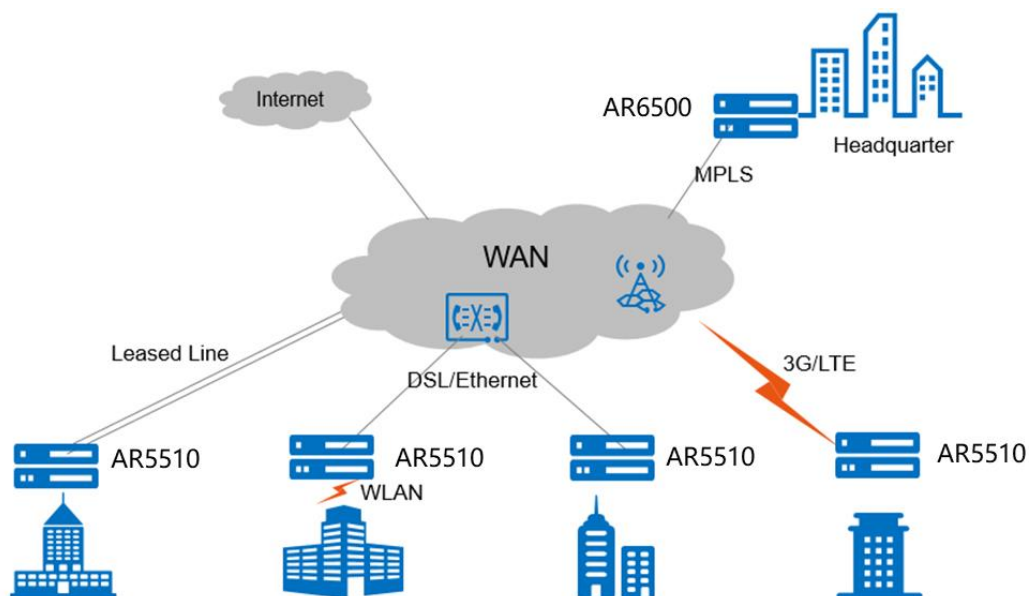
SD-WAN networking



- **WAN Interconnection Scenario**

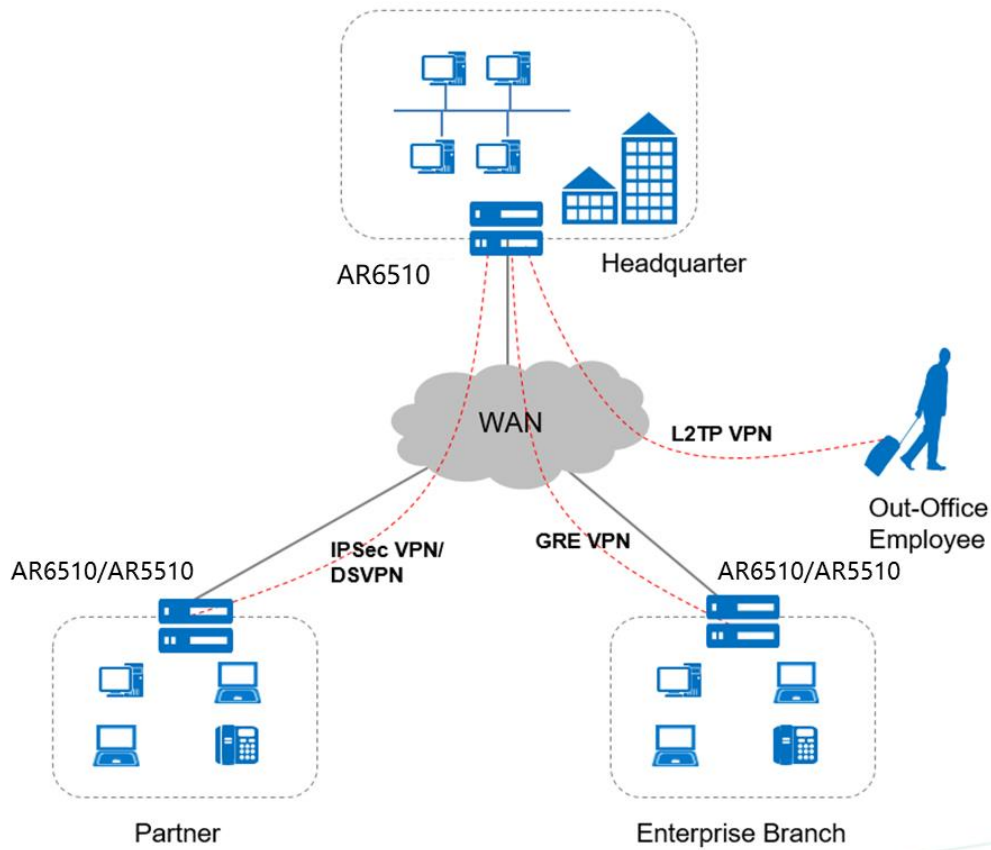
In this scenario, the NetEngine AR5510-H series routers are used as enterprise branch egresses and provide flexible WAN access methods to support remote network connections. A single NetEngine AR5510-H router can satisfy different access requirements, for example, for the private line, Ethernet, 3G, LTE, and WLAN access, helping the customer reduce deployment and maintenance costs while helping them extract much value.

WAN interconnection networking



- **Building Different Types of VPNs by Leveraging Internet Resources**

The NetEngine AR5510-H provides various secure access functions for communication between enterprise branches and between branches and headquarters. These functions also allow an enterprise's partners to access its resources. Secure tunnels such as GRE VPN, IPSec VPN, DSVPN, L2TP VPN, and EVPN tunnels can be set up between the headquarters and branches for secure data access and transmission. The NetEngine AR5510-H supports quick tunnel deployment and authentication for branches. Furthermore, partners authenticated and authorized by the AR5510-H can remotely access the enterprise resources over these tunnels.



Ordering Information

The NetEngine AR5510-H series routers are configured by selecting and installing the appropriate configuration module. The configuration module ordering information and descriptions are shown in the following tables.


Ordering components

Chassis Configuration	Description
NetEngine AR5510-H10T1	AR5510-H10T1,2*GE combo WAN,8*GE LAN,1*USB2.0,1*MIC slot
NetEngine AR5510-H8P2TW1	AR5510-H8P2TW1,2*GE combo WAN,8*GE LAN (PoE+),1*USB2.0,802.11b/g/n/ac,2*2MIMO,1*MIC slot
NetEngine AR5510-H10T2XW1	AR5510-H10T2XW1,2*10GE SFP+,10*GE LAN,1*USB,802.11b/g/n/ac/ax,2*2MIMO,1*MIC slot

Copyright © Huawei Technologies Co., Ltd. 2024. All rights reserved.

No part of this document may be reproduced or transmitted in any form or by any means without prior written consent of Huawei Technologies Co., Ltd.

Trademarks and Permissions

 HUAWEI and other Huawei trademarks are trademarks of Huawei Technologies Co., Ltd.

All other trademarks and trade names mentioned in this document are the property of their respective holders.

Notice

The purchased products, services and features are stipulated by the contract made between Huawei and the customer. All or part of the products, services and features described in this document may not be within the purchase scope or the usage scope. Unless otherwise specified in the contract, all statements, information, and recommendations in this document are provided "AS IS" without warranties, guarantees or representations of any kind, either express or implied.

The information in this document is subject to change without notice. Every effort has been made in the preparation of this document to ensure accuracy of the contents, but all statements, information, and recommendations in this document do not constitute a warranty of any kind, express or implied.

Huawei Technologies Co., Ltd.

Address: Huawei Industrial Base

Bantian, Longgang Shenzhen

518129 People's Republic of China

Website: www.huawei.com