



# Huawei NetEngine AR6510-L Series Enterprise Routers

Huawei NetEngine AR6510-L series enterprise routers are designed for headquarters of enterprises as well as branches of enterprises, providing the industry's most diversified service slot types. The NetEngine AR6510-L integrates various service features such as SD-WAN, routing, switching, voice, and security, providing diversified services and high performance.

## Product Overview

Huawei's next-generation NetEngine AR6510-L series enterprise routers use high-performance multi-core processors and a non-blocking switching structure, helping to deliver higher forwarding performance than the industry average. The NetEngine AR6510-L also integrates functions such as SD-WAN, 5G, routing, switching, VPN, security, and MPLS, ensuring diversified and cloud-based services are fully supported.

Huawei NetEngine AR6510-L series enterprise routers can be deployed at enterprise headquarters or branches as required to provide enterprise network egress capabilities. The NetEngine AR6510-L series consists of models such as NetEngine AR6510-L11T1X2, NetEngine AR6510-L5T4S4 which can meet networking requirements of enterprises of different scales.

 <p>NetEngine AR6510-L11T1X2</p>	<ul style="list-style-type: none"> <li>• Forwarding Performance: 2 Gbps</li> <li>• Fixed WAN ports: 2*GE Combo, 1*10GE SFP+ (compatible with GE SFP)</li> <li>• Fixed LAN ports: 1*GE Combo, 8*GE RJ45 (can be configured as WAN)</li> <li>• Dimensions (H x W x D): 43.6mm x 442mm x 220mm</li> </ul>
 <p>NetEngine AR6510-L5T4S4</p>	<ul style="list-style-type: none"> <li>• Forwarding Performance: 2 Gbps</li> <li>• Fixed WAN ports: 2*GE RJ45, 2*GE SFP</li> <li>• Fixed LAN ports: 2*GE SFP, 3*GE RJ45 (can be configured as WAN)</li> <li>• Dimensions (H x W x D): 44.5 mm x 442 mm x 420 mm</li> </ul>

## Features and Benefits

### Features and Benefits

Service Requirement	Features and Benefits
High performance	<ul style="list-style-type: none"> <li>• Multi-core processors and a non-blocking switching structure.</li> <li>• Higher forwarding performance than the industry average, providing the low latency for key services</li> </ul>
High reliability	<ul style="list-style-type: none"> <li>• Hot-swappable cards, ensuring service reliability and stability</li> <li>• Link backup for enterprise services, improving reliability</li> <li>• Fault detection and determination in milliseconds, minimizing service interruption time</li> </ul>

Service Requirement	Features and Benefits
5G Wireless access	<ul style="list-style-type: none"> <li>AR6510-L series support 5G SIC card and RU-201, provide high wireless bandwidth experience</li> <li>Support dual architecture, NSA/SA</li> </ul>
Easy O&M	Multiple management modes, including SD-WAN management, SNMP-based network management, and web-based network management, simplifying network deployment and reducing OPEX
Service convergence	Integration of functions such as routing, switching, VPN, security, WLAN, meeting diversified enterprise service requirements, saving space, and reducing TCO
Security	Built-in firewall, IPS, URL filtering, and multiple VPN technologies, providing comprehensive security protection capabilities
SD-WAN Ready	<ul style="list-style-type: none"> <li>Built-in SD-WAN solution, building cost-effective and business-friendly connections over the Internet</li> <li>ZTP (email-, USB-, and DHCP-based deployment), minimizing skill requirements and provisioning devices in minutes</li> <li>First packet identification (FPI) for SaaS applications and service awareness for complex applications, identifying over 90% of applications</li> <li>Traffic steering based on bandwidth and link quality, ensuring experience of key applications and improving bandwidth utilization to up to 90%</li> </ul>

#### Product Specifications

Item	NetEngine AR6510-L11T1X2	NetEngine AR6510-L5T4S4
Forwarding Performance (LAN - > WAN + WAN - > LAN, NAT + ACL + QoS, IMIX)	2 Gbps	2 Gbps
Fixed WAN ports	2 x GE combo, 1 x 10GE SFP+ (compatible with GE SFP)	2 x GE RJ45, 2 x GE SFP
Fixed LAN ports	1 x GE combo, 8 x GE RJ45 (can be configured as WAN)	2 x GE SFP, 3 x GE RJ45 (can be configured as WAN)
5G uplink	Support 5G SIC	Support 5G SIC
SIC slots	2	4
WSIC slots	0 (default)/1 (maximum)	0 (default)/2 (maximum)
XSIC slots	-	0 (default)/1 (maximum)
USB port	1 x USB	
Auxiliary or console port	1 x RJ45 console port	1 x RJ45 console port
Memory	4 GB	4 GB
Flash memory	1 GB	1 GB
Hot swapping	Supported	Supported

Item	NetEngine AR6510-L11T1X2	NetEngine AR6510-L5T4S4
Router dimensions, With no mounting bracket installed (H x W x D)	43.6mm x 442mm x 220mm	44.5 mm x 442 mm x 420 mm
Router dimensions, With mounting bracket installed (H x W x D)	43.6mm x 482.6mm x 220mm	44.5 mm x 482.6 mm x 572.5 mm
Weight	3.2kg	5.0 kg
Rack	IEC	IEC
Occupied rack space	1U	1U
Maximum input current (AC)	2A	3A
Maximum output power (AC)	60 W	70W
Typical power consumption	18W	18W
Maximum power consumption	AR6510-L11T1X2:33W	AR6510-L5T4S4:34W
Power supply redundancy	-	Supported
Noise level	49.6 dB	54 dB

#### Software Features and Protocols

Item	NetEngine AR6510-L
Basic function	DHCP server/client/relay, PPPoE server/client, NAT, and sub-interface management
LAN	IEEE 802.1P, IEEE 802.1Q, IEEE 802.3, VLAN management, VLAN aggregation, MAC management, STP/RSTP
WLAN (AC)	AP management (AC discovery, AP access, and AP management), CAPWAP, WLAN user management, WLAN radio management (802.11a/b/g/n/ac), WLAN QoS (WMM), WLAN security (WEP, WPA, WPA2, key management)
IPv4 unicast routing	Routing policies, static routes, RIP, OSPF, IS-IS, BGP
IPv6 unicast routing	Static routes, routing policies, RIPng, OSPFv3, IS-ISv6, BGP4+
Basic IPv6 function	IPv6 ND, IPv6 PMTU, IPv6 FIB, IPv6 ACL, ICMPv6, DNSv6, DHCPv6
IPv6 tunneling	Manual tunnel, automatic tunnel, GRE tunnel, IPv6 over IPv4 tunnel, 6 to 4 tunnel, ISATAP
Multicast	IGMP v1/v2/v3, PIM-SM, PIM-DM, MSDP, MBGP, IPv6 PIM, MLD
MPLS	LDP, MPLS L3 VPN, VLL, PWE3, static LSP, dynamic LSP, MPLS TE, IP FRR, LDP FRR, TE FRR
VPN	IPsec VPN, GRE VPN, DSVPN, A2A VPN, L2TP VPN, L2TPv3 VPN
QoS	DiffServ mode, MPLS QoS, priority mapping, traffic policing (CAR), traffic shaping, congestion avoidance, congestion management, MQC (traffic classifier, traffic behavior, and traffic policy), hierarchical QoS, Smart Application Control (SAC)
WAN Optimization	Multi-fed and Selective receiving, per-packet load balancing

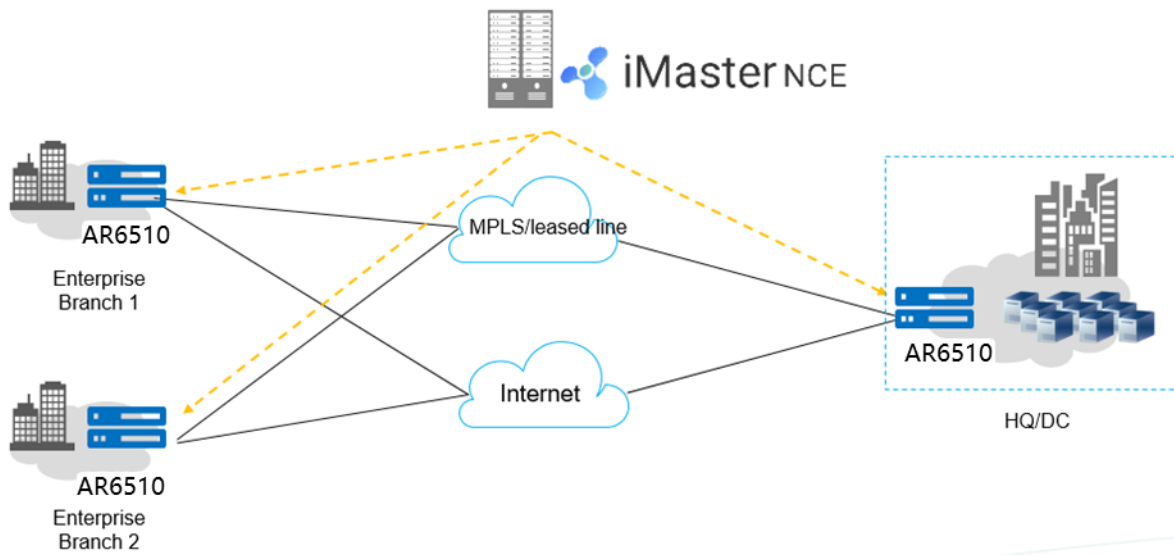
Item	NetEngine AR6510-L
Security	ACL (v4/v6), domain-based stateful firewall, 802.1X authentication, MAC address authentication, portal authentication, AAA authentication, RADIUS authentication, HWTACACS authentication, PKI, broadcast storm suppression, ARP security, ICMP attack defense, URPF, CPCAR, blacklist, attack source tracing, online behavior management, IPS, URL filtering
Management and maintenance	Upgrade management, device management, web-based network management, GTL, SNMP (v1/v2c/v3), RMON, NTP, CWMP, Auto-Config, URL-based/USB-based/DHCP deployment, NETCONF/YANG, CLI, NetStream, IP FPM, TCP FPM, TWAMP Light, IP accounting, NQA

## Networking and Application

- SD-WAN Using Hybrid Links**

In the SD-WAN Solution, the NetEngine AR6510-L functions as the hub of medium- to large-sized enterprises or gateway of large branches and supports hybrid access using multiple physical links, such as MPLS private lines and Internet links. The solution also leverages Huawei's next-generation controller, the Agile Controller, which implements centralized and visualized management. The NetEngine AR6510-L provides extensive SD-WAN features and delivers optimal service experience for enterprises through intelligent application identification, intelligent traffic steering, and intelligent acceleration.

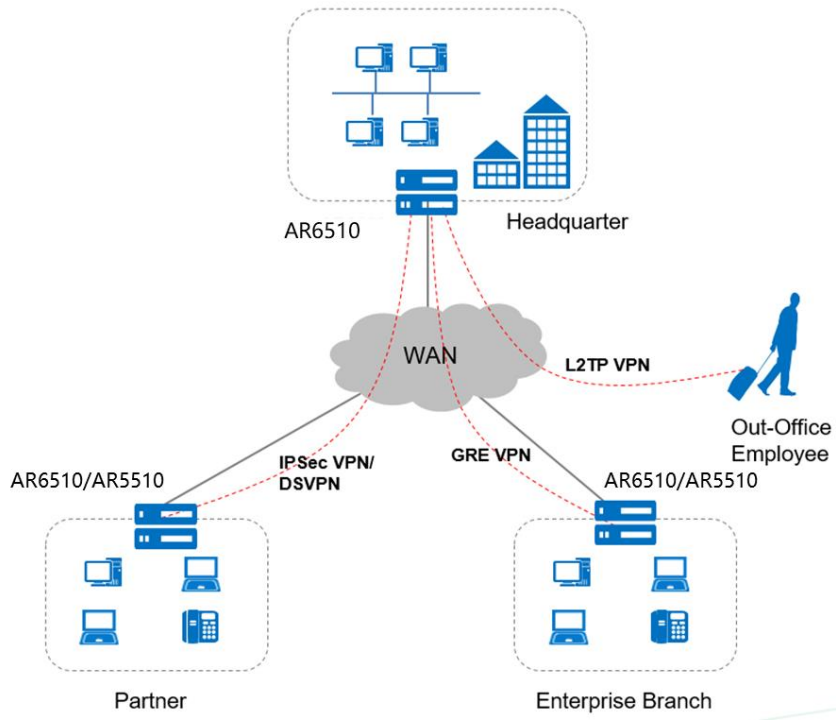
### SD-WAN networking



- Building Different Types of VPNs by Leveraging Internet Resources**

The NetEngine AR6510-L provides various secure access functions for communication between enterprise branches and between branches and headquarters. These functions also allow an enterprise's partners to access its resources. Secure tunnels such as GRE VPN, IPSec VPN, DSVPN, L2TP VPN, and EVPN tunnels can be set up between the headquarters and branches for secure data access and transmission. The NetEngine AR6510-L supports quick tunnel deployment and authentication for branches. Furthermore, partners authenticated and authorized by the NetEngine AR6510-L can remotely access the enterprise resources over these tunnels.

The NetEngine AR6510-L supports a wide selection of cards and meets the extended service security requirements. Data encryption and decryption is hardware-based, greatly improving data encryption and decryption performance and providing E2E security assurance for customers.



# Ordering Information

Begin by ordering the chassis. Then select interface modules, any special licenses, and any desired accessories (SD card or USB disk).


## Ordering components

Chassis Configuration	Description
NetEngine AR6510-L11T1X2	AR6510-L11T1X2, 2*GE combo WAN, 1*10GE(SFP+) WAN, 8*GE LAN, 1*GE combo LAN, 2*USB, 2*SIC
NetEngine AR6510-L5T4S4	AR6510-L5T4S4 AC host, 5*GE RJ45, 4*GE SFP, 1*USB 3.0, 4*SIC

**Copyright © Huawei Technologies Co., Ltd. 2022. All rights reserved.**

No part of this document may be reproduced or transmitted in any form or by any means without prior written consent of Huawei Technologies Co., Ltd.

### Trademarks and Permissions

 HUAWEI and other Huawei trademarks are trademarks of Huawei Technologies Co., Ltd.

All other trademarks and trade names mentioned in this document are the property of their respective holders.

### Notice

The purchased products, services and features are stipulated by the contract made between Huawei and the customer. All or part of the products, services and features described in this document may not be within the purchase scope or the usage scope. Unless otherwise specified in the contract, all statements, information, and recommendations in this document are provided "AS IS" without warranties, guarantees or representations of any kind, either express or implied.

The information in this document is subject to change without notice. Every effort has been made in the preparation of this document to ensure accuracy of the contents, but all statements, information, and recommendations in this document do not constitute a warranty of any kind, express or implied.

### Huawei Technologies Co., Ltd.

Address: Huawei Industrial Base  
Bantian, Longgang Shenzhen 518129  
People's Republic of China  
Website: e.huawei.com